

PT27/36R

The Electric End Rider Pallet Truck Built for the most Demanding Warehouse Applications



PT27R

PT36R

INTRODUCTION

The electric End Rider Pallet Truck PT27/36R (capacity 6000 lbs / 8000 lbs) are designed to withstand the most demanding applications of order picking, capable to work a wide range of warehouse applications as well as loading dock operations. The truck combines toughest durability with highest efficiency and performance. The PT 27/36R's high speed can ensure more pallet operations in less time than others which saves labor costs. One of the best trucks on the market.

ADVANTAGES

- Efficiency, Durability, Performance (EDP) ensured by German engineering, comes with a powerful German heavy duty AC drive unit.
- One of the fastest trucks in the market. Robust and reliable ergonomic.Rider-tiller with cast metal.
- High quality top brand components Strong forks designed for single(6000lbs) and double(8000lbs) pallet transport.



Generous platform

The roomy platform ensures operator comfort throughout the day.



Ergonomic robust German tiller

The operator friendly robust metal casted German tiller provides maximum of ergonomics and safety in riding-as well as in walking mode.



Jog Button

Jog button on the tiller allows operator to walk beside the truck. Additional sidetracker for travelling in tiller direction to increase productivity in order picking operations. The coast mode allows slowly coasting.



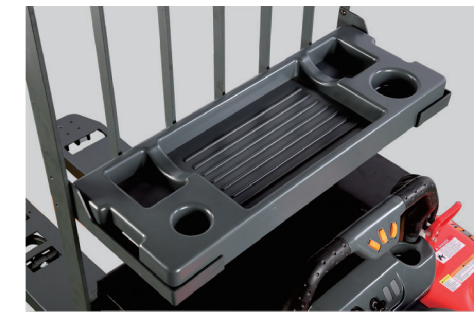
Backrest

Heavy duty load backrest with a tilt down design to facilitate battery change out. Optional battery rollers provides easier battery change out.



US Tailored Open Battery Compartment

13.8" US tailored open battery compartment ready for wide range of industrial batteries, flexible for different battery dimensions.



Tray

The optional available tray gives the right place for your work equipment.



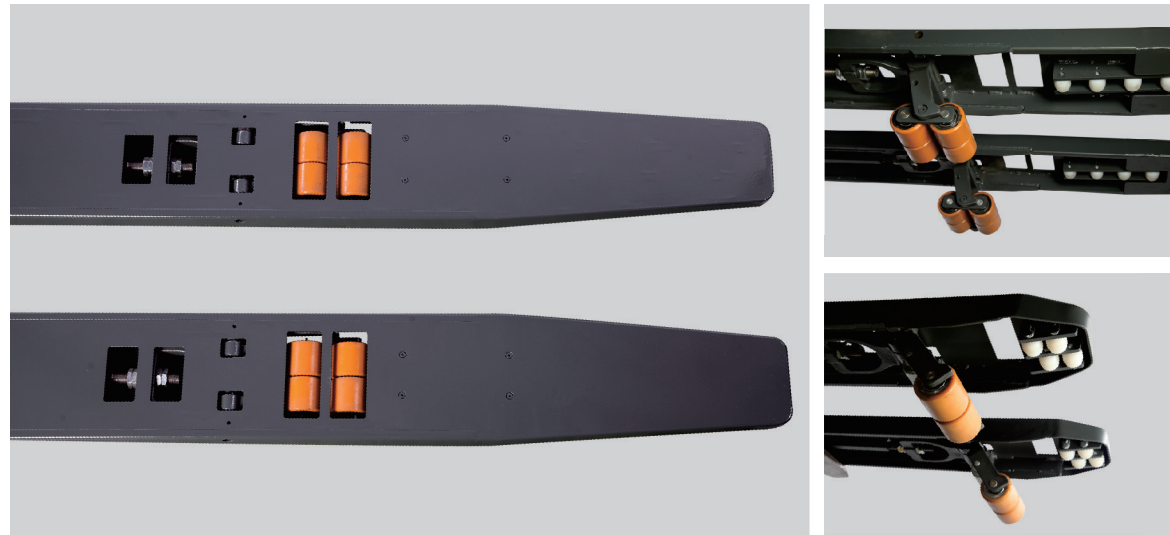
Grab bar with electronic controls

All control elements ensure safety and productivity. They are well ergonomically placed to make operations effortless. The coated grab bar keeps you safe during the whole day.



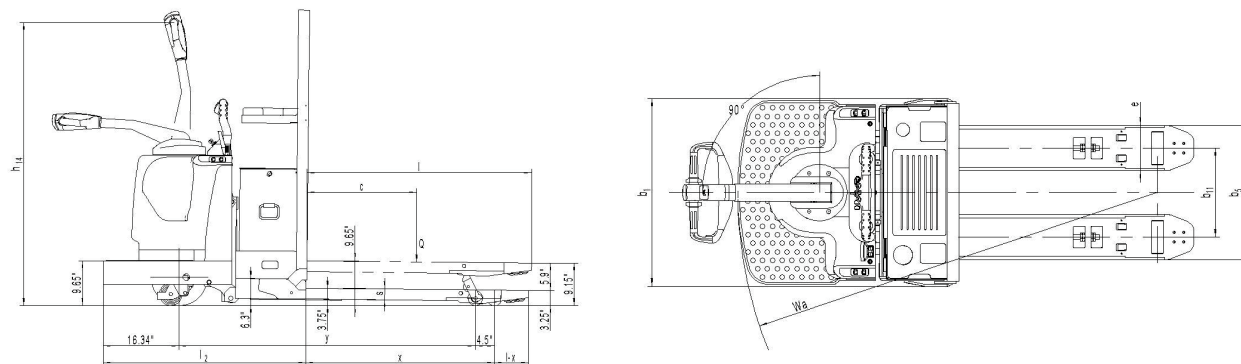
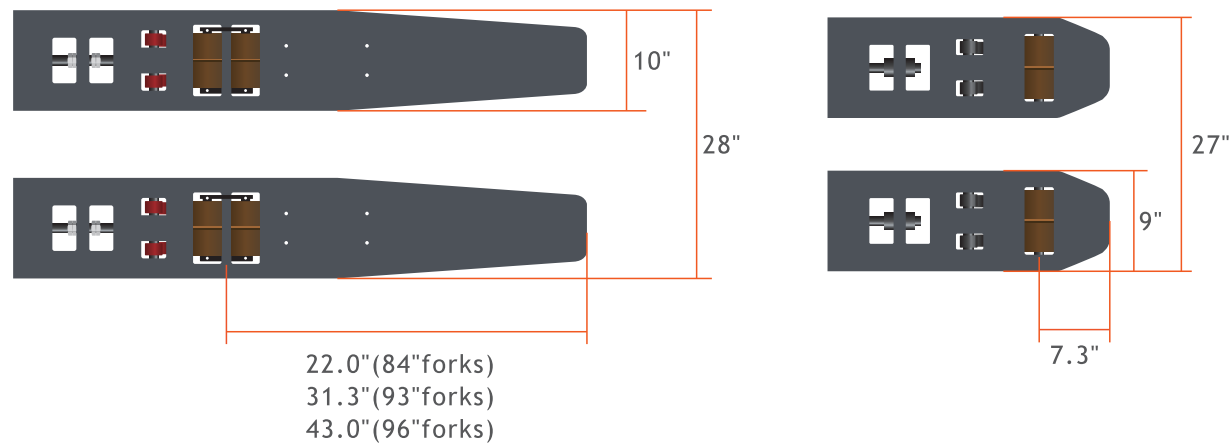
Pallet Truck

			PT27R Fork Tip					PT36R Fork Tip				
Nominal Fork Length		mm	915	1067	1220	1372	1525	2440	2135	2362	2440	
Actual Fork Length	l	mm	908	1060	1213	1365	1518	2433	2128	2355	2433	
Overall Length	l1	mm	2025	2177	2330	2482	2635	3550	127.8	136.8	3550	
Wheelbase(raised)	y	mm	1305	1458	1615	1765	1917	2835	2130	2130	2130	
Load Wheel Distance	x	mm	723	875	1028	1180	1333	2248	1567	1567	1567	
Fork Tip Length	l-x	mm	185	185	185	185	185	185	560	795	864	
Turning Radius(raised)	Wa	mm	1840	1992	2145	2297	2450	3365	2660	2660	2660	
Fork Width	e	mm							230		255	



Durability and Functionality

One of the strongest and most solid chassis in the market, the best solution for the toughest application in the market! The easy fork adjustment as well as access to the main components ensures excellent serviceability. The rigid strength of the forks provides maximum durability.



Type sheet for industrial truck acc. to VDI 2198				1KG=2.2LB 1INCH=25.4MM	
Identification					
1.2	Manufacturer's type designation			PT27R	PT36R
1.3	Drive			Battery	Battery
1.4	Operator type			Pedestrian	Pedestrian
1.5	Load Capacity / rated load	Q (t)		2.7	3.6
1.6	Load centre distance	c (mm)		600	1220
1.8	Load distance ,centre of drive axle to fork	x (mm)		1035	1345
1.9	Wheelbase	y (mm)		1615	2130
Weights					
2.1	Service weight	kg		1070	1150
2.2	Axle loading, laden front/rear	kg		1390/2380	1300/3470
2.3	Axle loading, unladen front/rear	kg		830/240	920/250
Wheels, Chassis					
3.1	Tires			Polyurethane (PU)	Polyurethane (PU)
3.2	Tire size, front	Øx w (mm)		Ø310×105	Ø310×105
3.3	Tire size, rear	Øx w (mm)		Ø82×82	Ø82×70
3.4	Additional wheels(dimensions)	Øx w (mm)		Ø125×60	Ø125×60
3.5	Wheels,number front/rear(x=driven wheels)			1x+2/4	1x+1/8
3.6	Tread, front	b10 (mm)		455	455
3.7	Tread, rear	b11 (mm)		560/685	585/710
Basic Dimensions					
4.4	Lift	h3(mm)		150	150
4.9	Height of tiller in drive position min./ max.	h14 (mm)		880/1550	880/1550
4.15	Height, lowered	h13 (mm)		83	83
4.19	Overall length	l1 (mm)		2330	3350
4.20	Length to face of forks	l2 (mm)		1095	1095
4.21	Overall width	b1 (mm)		940/960	940/960
4.22	Fork dimensions	s/e/l (mm)		60/230/1220	60/255/2440
4.25	Width across forks	b5 (mm)		560/685	585/710
4.32	Ground clearance, centre of wheelbase	m2 (mm)		25	25
4.33	Aisle width for pallets1000X1200 crossways	Ast (mm)		2700	3900
4.35	Turning radius	Wa (mm)		2145	2660
Performance Data					
5.1	Travel speed, laden/ unladen	km/h		11/14	9.5/12
5.2	Lift speed, laden/ unladen	mm/s		38/49	30/40
5.3	Lowering speed, laden/ unladen	mm/s		55/50	45/42
5.8	Max. gradeability, laden/ unladen	%		8/15	6/15
5.10	Service brake			Electromagnetic	Electromagnetic
E-Motor					
6.1	Drive motor rating S2 60min	kW		3.8	3.8
6.2	Lift motor rating at S3 10%	kW		2.2	2.2
6.3	Battery acc. to DIN 43531/ 35/ 36 A, B, C, no			no,5PZS	no,5PZS
6.4	Battery voltage, nominal capacity K5	V / Ah		24/350	24/350
6.5	Battery weight	kg		320	320
6.6	Energy consumption acc. to VDI cycle	kWh/h		1.83	1.83
Other Details					
8.1	Type of drive control			AC speed Control	
8.4	Sound level at driver's ear acc. to EN 12053	dB(A)		69	
8.6	Steering			Mechanical	